



Cover

respect ability

FIGHTING STIGMAS. ADVANCING OPPORTUNITIES.

**Building an Equitable Recovery -
Solutions for Texans with
Disabilities**

<https://www.respectability.org/>

Disability Statistics in Texas (Pre-Pandemic)



Gov. Greg Abbott (R-TX)

- Total # of PWDs in State: 3,282,543
- Total # of working-age PWDs: 1,658,935
- # of working-age PWDs with Jobs: 695,898
- Employment Rate-working-age PWDs: 41.9%
- Employment Rate-working-age Non-PWDs: 77.5%
- Gap in Labor Force Participation Rates between PWDs and non-PWDs: 35.5%
- Poverty Rate of PWDs: 22.8%

Source: Annual Disability Statistics Compendium: 2020 Durham, NH: Univ. of New Hampshire, Institute on Disability

<https://disabilitycompendium.org/>

Recognizing Racial Disparities in Texas

- There are 735,617 working-age white Texans with disabilities. Out of that number, only 317,308 or 43.1% percent have jobs.
- Fully 13.9% percent of white Texans with disabilities live in poverty compared to 7.9% percent of Texans without disabilities.
- There are 271,739 working-age African Americans with disabilities. Out of that number, only 95,711 or 35.2% percent have jobs.
- Fully 29.1% percent of African Americans with disabilities live in poverty compared to 18.1% percent of African Americans without disabilities.

SOURCE: Annual Disability Statistics Supplement: 2020. Univ. of New Hampshire, Institute on Disability.

<https://disabilitycompendium.org/compendium/2020-annual-disability-statistics-supplement>

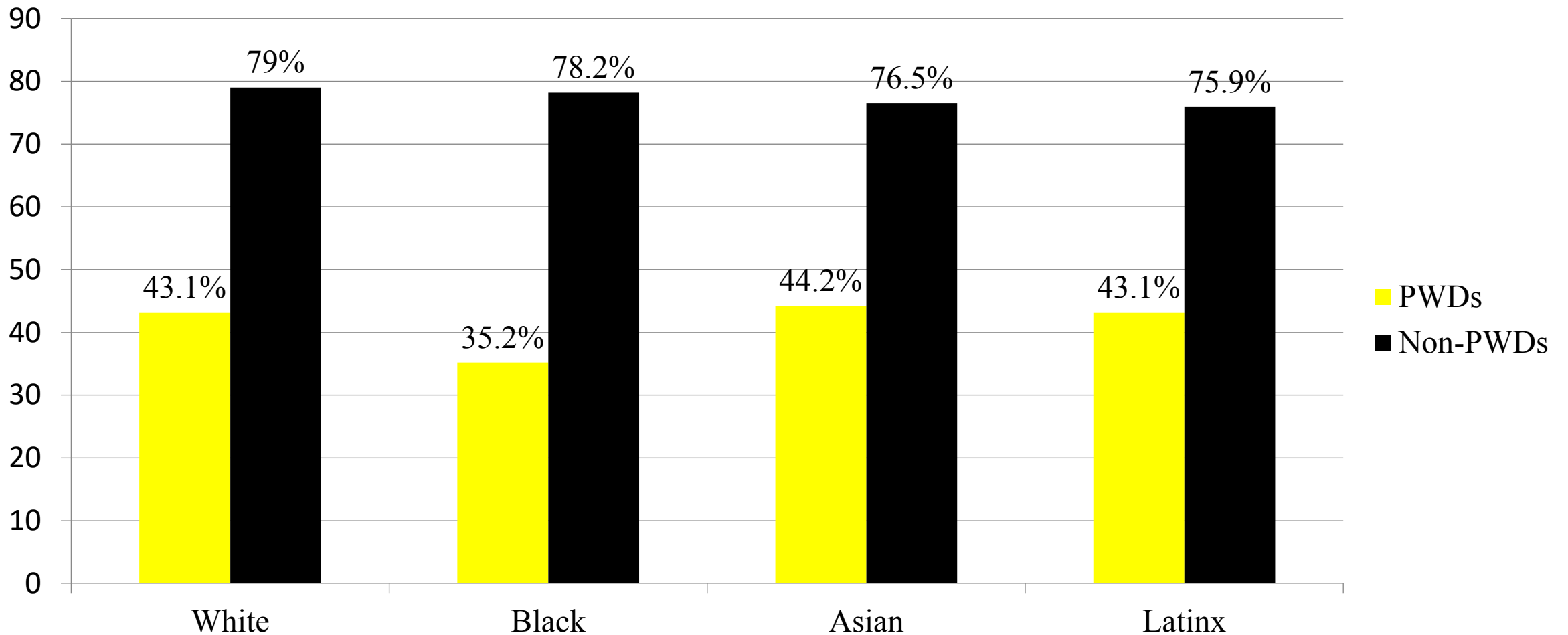
Recognizing Racial Disparities in Texas – 2

- There are 571,671 working-age Hispanic/Latinx people with disabilities. Out of that number, fully 246,550 or 43.1% percent have jobs.
- Fully 26% percent of Hispanic/Latinx people with disabilities live in poverty, compared to only 18.8% of Hispanic/ Latinx people without disabilities.
- There are 37,018 working-age Asian Americans with disabilities. Out of that number, only 16,345 or 44.2% percent have jobs.
- Fully 15.8% percent of Asian Americans with disabilities live in poverty compared to 9.8% percent of Asian Americans without disabilities.

SOURCE: Annual Disability Statistics Supplement: 2020. Univ. of New Hampshire, Institute on Disability.

<https://disabilitycompendium.org/compendium/2020-annual-disability-statistics-supplement>

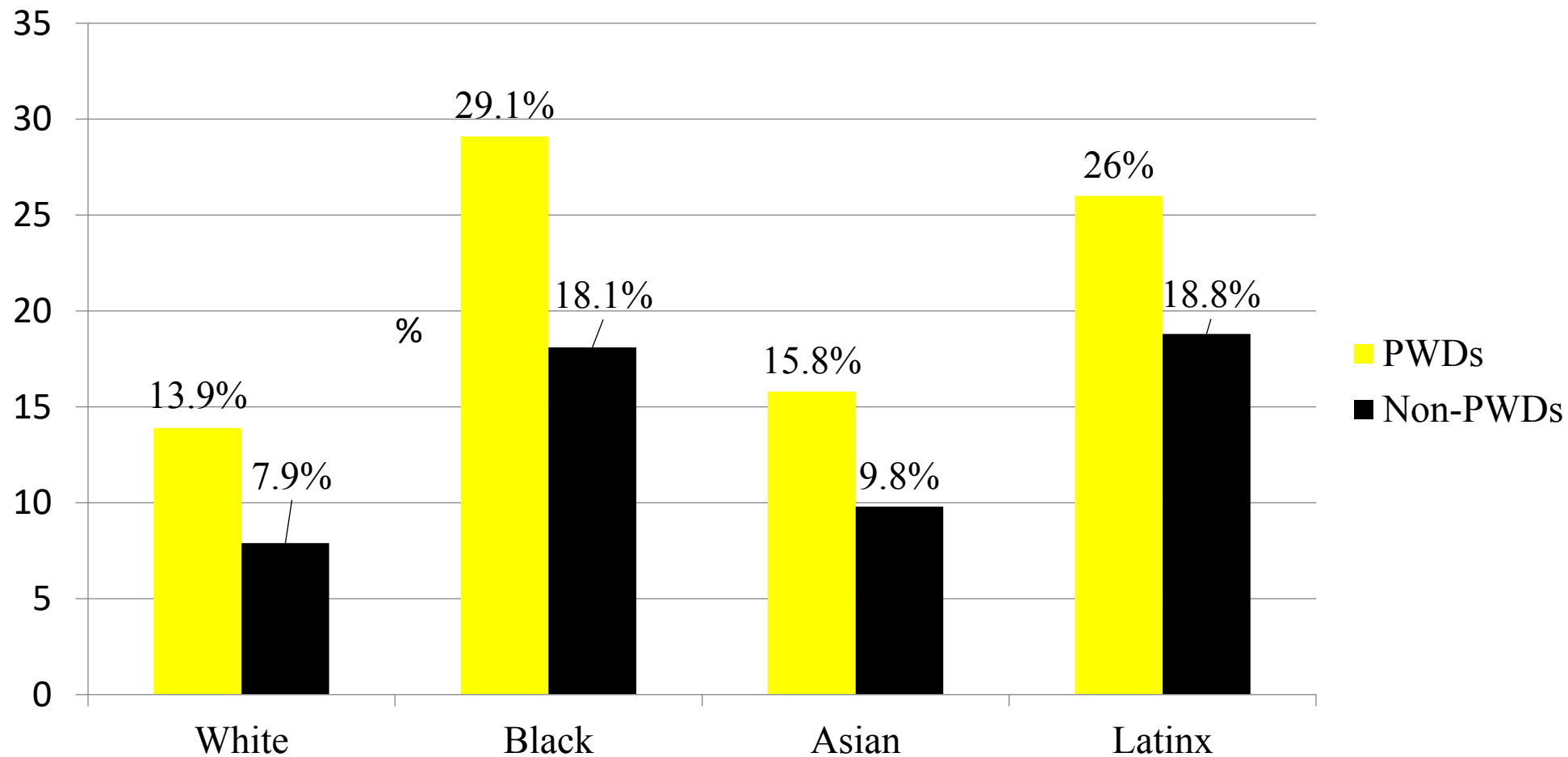
Employment Rates for Working-Age Texans w/ & w/o Disabilities, by Race – 2019 (Pre-COVID)



SOURCE: Annual Disability Statistics Supplement: 2020. Univ. of New Hampshire, Institute on Disability.

<https://disabilitycompendium.org/compendium/2020-annual-disability-statistics-supplement>

Poverty Rates for Working-Age Texans w/ & w/o Disabilities, by Race – 2019 (Pre-COVID)



SOURCE: Annual Disability Statistics Supplement: 2020. Univ. of New Hampshire, Institute on Disability.

<https://disabilitycompendium.org/compendium/2020-annual-disability-statistics-supplement>

Percentage & Number of Disability by Type - SWDs

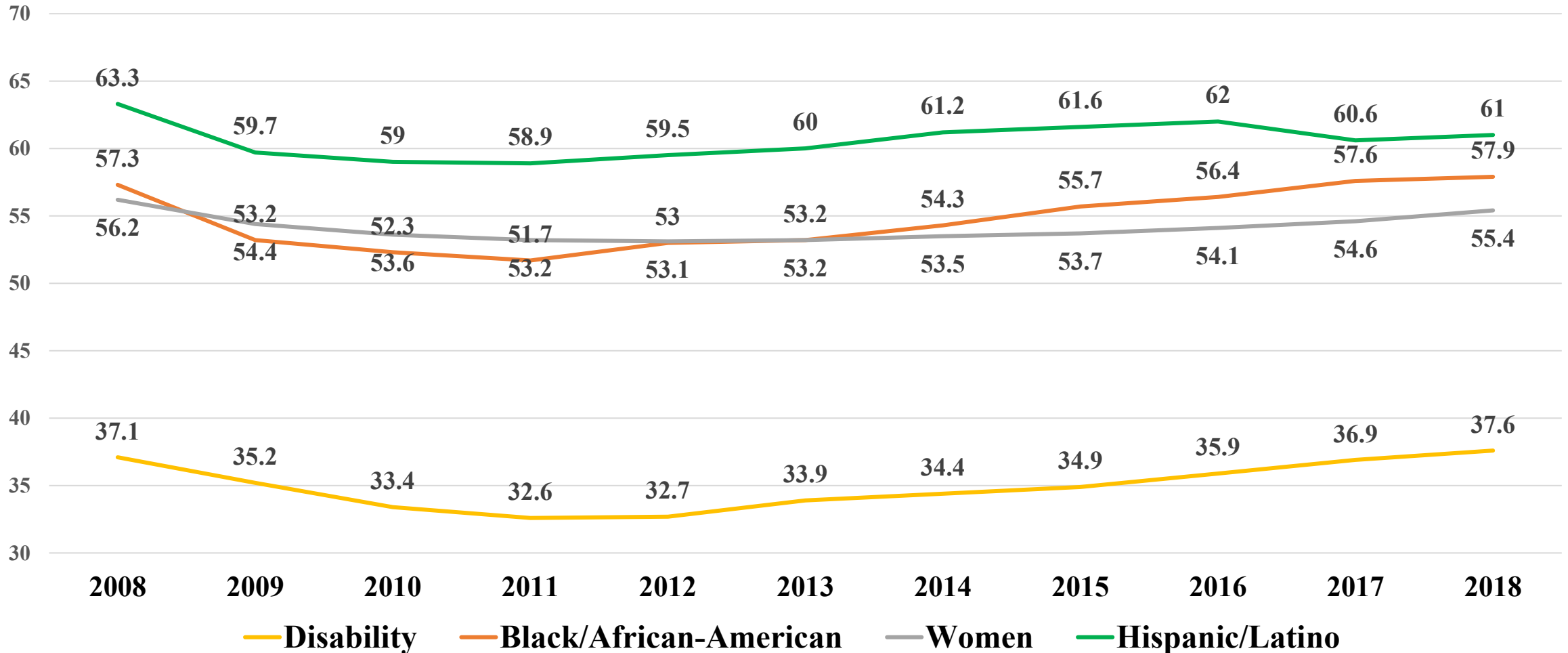
| | Autism | Deaf-blindness | Developmental delay | Emotional disturbance | Hearing disabilities | Intellectual disabilities | Multiple disabilities | Orthopedic Disability | Other health conditions | Specific learning disabilities | Speech or language | Traumatic brain injury (TBI) | Visual disabilities |
|---|--------|----------------|---------------------|-----------------------|----------------------|---------------------------|-----------------------|-----------------------|-------------------------|--------------------------------|--------------------|------------------------------|---------------------|
| Number of SWDs with that Disability | 74,581 | 199 | DATA INCOMPLETE | 36,065 | 6,603 | 59,192 | 7,841 | 2,861 | 80,570 | 183,177 | 97,810 | 1,129 | 3,177 |
| Percentage of SWDs with that Disability | 13% | 0.0003% | DATA INCOMPLETE | 6% | 1% | 10% | 1.4% | 0.5% | 14% | 33% | 17% | 0.2% | 0.05% |

In total, there are 553,205 students with disabilities in Texas' Public School System today.

Source: IDEA Section 618 Data Products: Static Table -

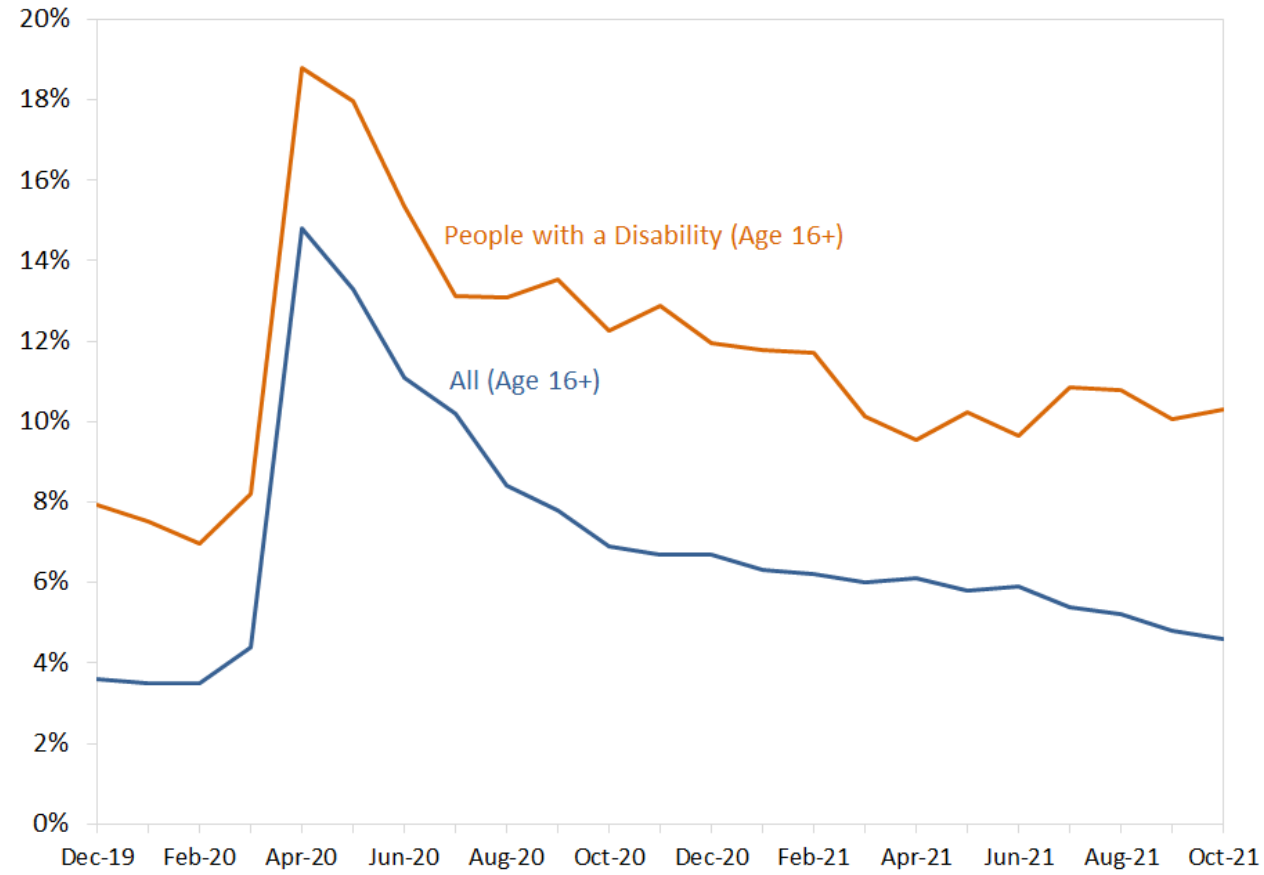
<https://www2.ed.gov/programs/osepidea/618-data/static-tables/index.html>

Employment Rates of Minority Populations (Percentage of population) – 2008 to 2018 – WIP



SOURCES: <https://www.statista.com/statistics/793961/employment-among-disabled-us-adults/>
<https://www.bls.gov/charts/employment-situation/employment-population-ratio.htm>

Unemployment Rates for PWDs in 2020

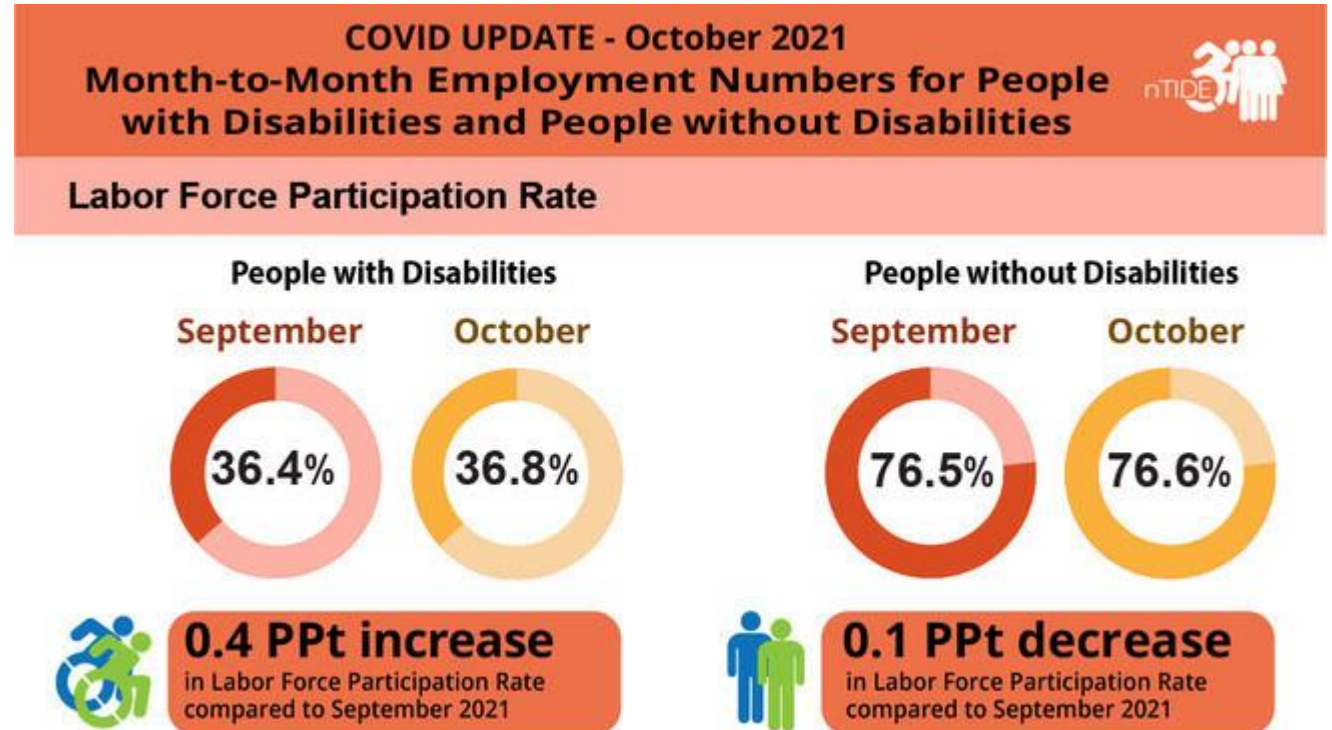


■ FEDERAL RESERVE BANK OF ST. LOUIS

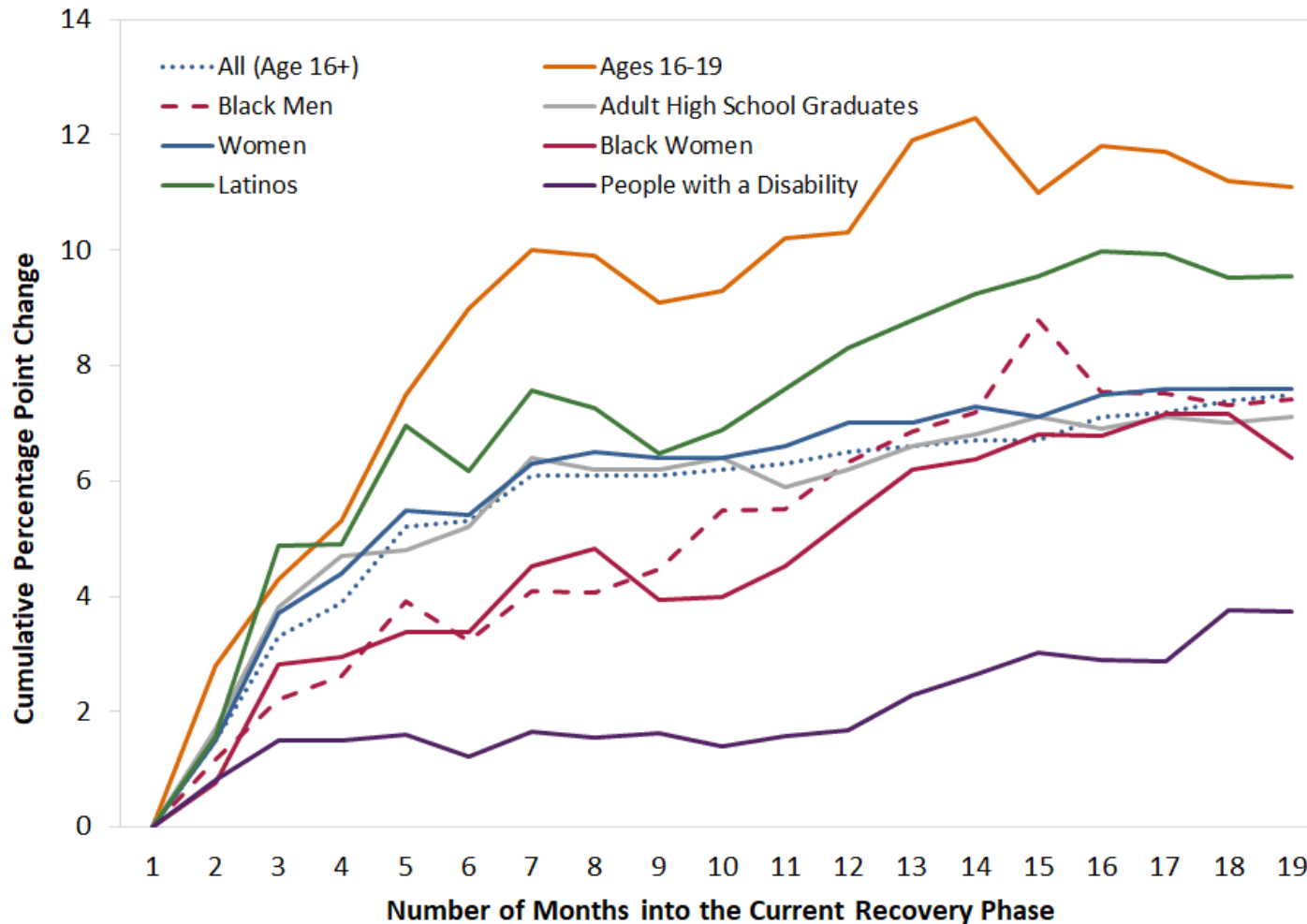
Source:
<https://www.stlouisfed.org/on-the-economy/2021/november/current-labor-market-workers-disability>

Labor Force Participation Rate in October 2021

- As of October 2021, the labor force participation rate for working-age people with disabilities is now 2 full percentage points higher than it was before COVID-19.
- **This means that people with disabilities are engaging with the labor force in higher numbers than before the pandemic.**



Rebound in the Employment-to-Pop Ratio for Vulnerable Groups during the Recovery

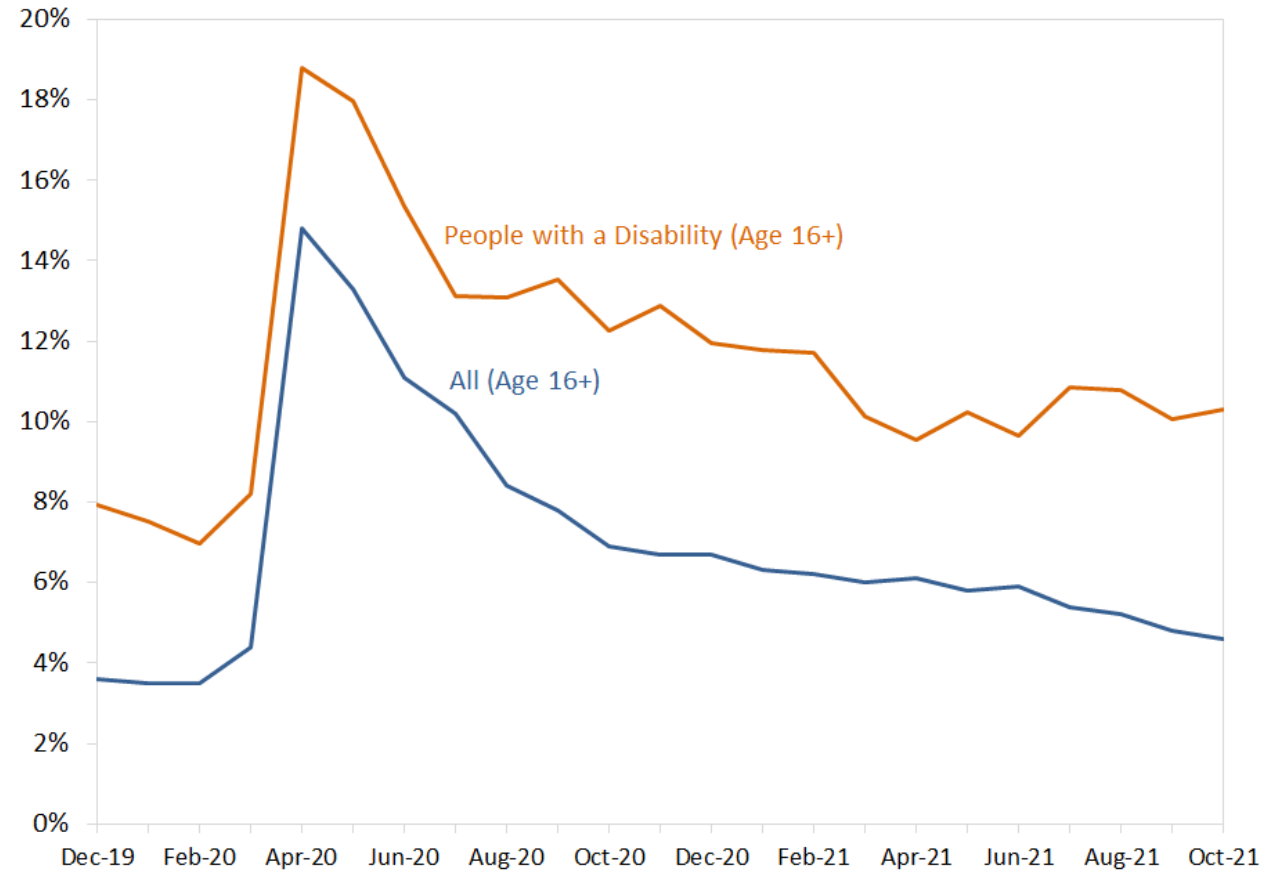


■ FEDERAL RESERVE BANK OF ST. LOUIS

Source:

<https://www.stlouisfed.org/on-the-economy/2021/november/current-labor-market-workers-disability>

Unemployment Rates for PWDs in 2020

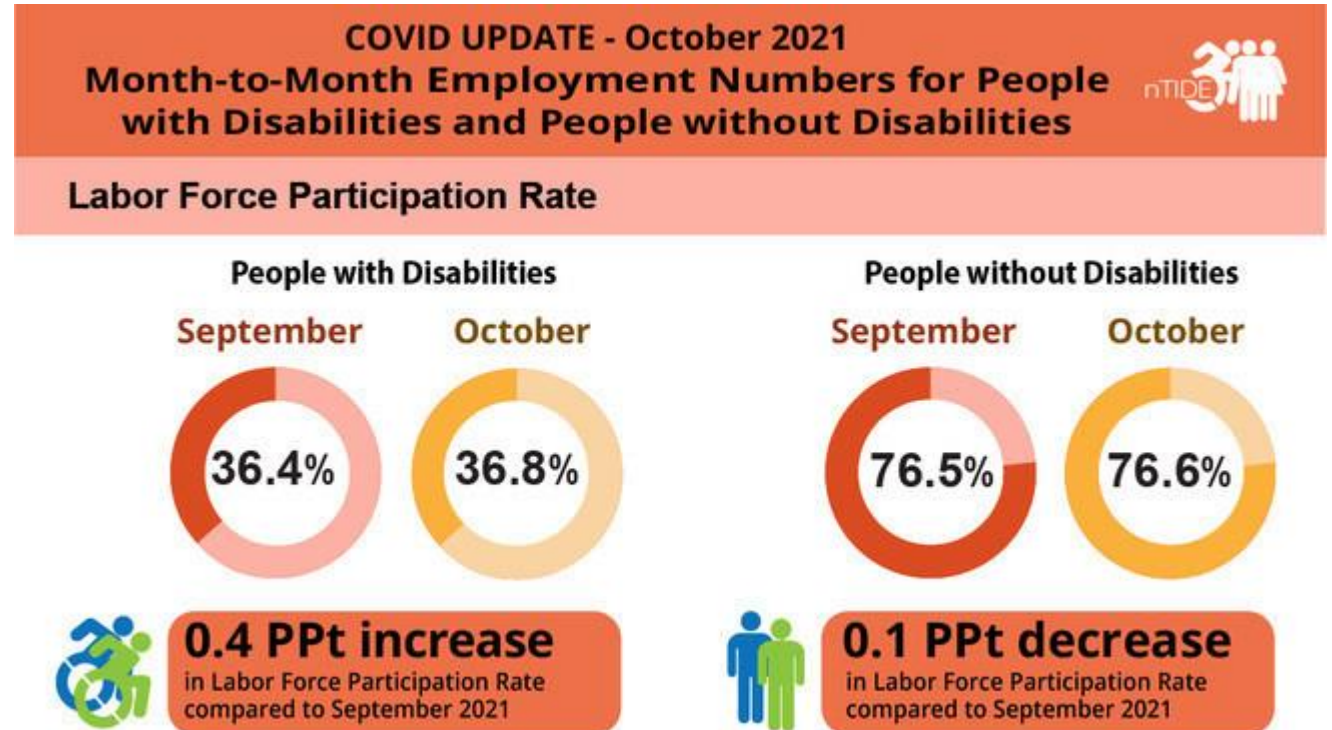


■ FEDERAL RESERVE BANK OF ST. LOUIS

Source:
<https://www.stlouisfed.org/on-the-economy/2021/november/current-labor-market-workers-disability>

Labor Force Participation Rate in October 2021

- As of October 2021, the labor force participation rate for working-age people with disabilities is now 2 full percentage points higher than it was before COVID-19.
- **This means that people with disabilities are engaging with the labor force in higher numbers than before the pandemic.**



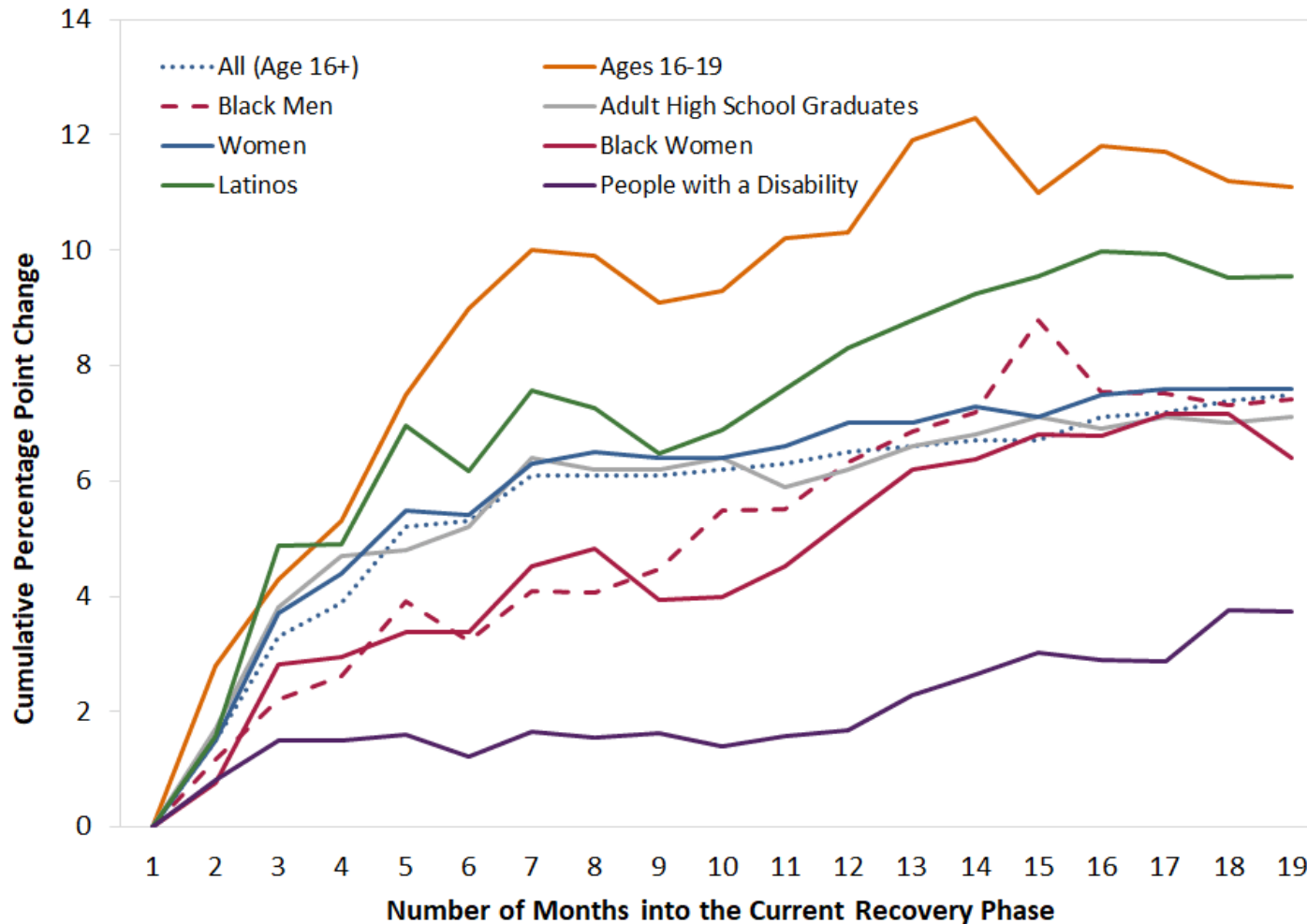
Would you like to know more? Resources!

- [People with Disabilities At Work](#)
- [Finding a Job as a Person With a Disability in Los Toolkit](#)
- [“Born for Business” Disability Entrepreneurship Toolkit](#)
- [Job Search Websites & Job Training Resources](#)
- [Internships / Fellowships for College Students / Graduates with Disabilities](#)
- [State Level Employment Resources](#) / [Business Focused Disability Organizations](#)
- [Disability and Employment Data Sources](#) / [State Data and State Plan Comments](#)
- [General Resources for Employers](#) / [#RespectTheAbility Campaign](#)
- [Press Clips on the Benefits of Hiring People with Disabilities](#)
- [Race, Implicit Bias and Privilege](#)
- [Local, National and Historical Context](#) / [Equity and Philanthropy Resources](#)

Equity and Access Webinar Series

- [Disability 101](#)
- [Disability History](#)
- [How to Ensure Accessible Events](#)
- [How to Recruit, Accommodate and Promote People with Disabilities for Volunteer Leadership, Board Positions and Paid Employment](#)
- [How to Ensure A Welcoming Lexicon and Inclusive Storytelling](#)
- [How to Ensure Accessible Websites and Social Media](#)
- [Premium Skills Workshop in Social Media Accessibility](#)
- [How to Ensure Legal Rights and Compliance Obligations: Exploring the Rights of Employees and Participants, and the Obligations of Nonprofit Organizations Under the Law](#)

Rebound in the Employment-to-Pop Ratio for Vulnerable Groups during the Recovery



■ FEDERAL RESERVE BANK OF ST. LOUIS

Source:

<https://www.stlouisfed.org/on-the-economy/2021/november/current-labor-market-workers-disability>



respect
ability

FIGHTING STIGMAS. ADVANCING OPPORTUNITIES.

THANK YOU!

Philip Kahn-Pauli
Policy and Practices Director,
RespectAbility

PhilipP@RespectAbility.org

(202) 525-8755

respect
ability