



respect
ability

FIGHTING STIGMAS. ADVANCING OPPORTUNITIES.

**Building an Equitable Recovery -
Solutions for Washingtonians
with Disabilities**

December 15th, 2021

<https://www.respectability.org/>



61 Million
people in the US
have a disability.*

People with disabilities
want
opportunities
Just like anyone else.

* Source: US Census

1 in 4
adults have a
disability
(physical, sensory, cognitive,
mental health or other)



Disability Statistics in Washington



Gov. Jay Inslee (D-WA)

- Total # of people with disabilities (PWDs) in Washington: 958,138
- Total # of working-age PWDs: 478,673
- # of working-age PWDs with Jobs: 201,400
- Employment Rate: working-age PWDs: 42%
- Employment Rate: working-age Non-PWDs: 79.5%
- Gap in Labor Force Participation Rates between PWDs and non-PWDs: 37.4%
- Poverty Rate of PWDs: 22.1%

Source: Annual Disability Statistics Compendium: 2020 Durham, NH: Univ. of New Hampshire, Institute on Disability

<https://disabilitycompendium.org/>

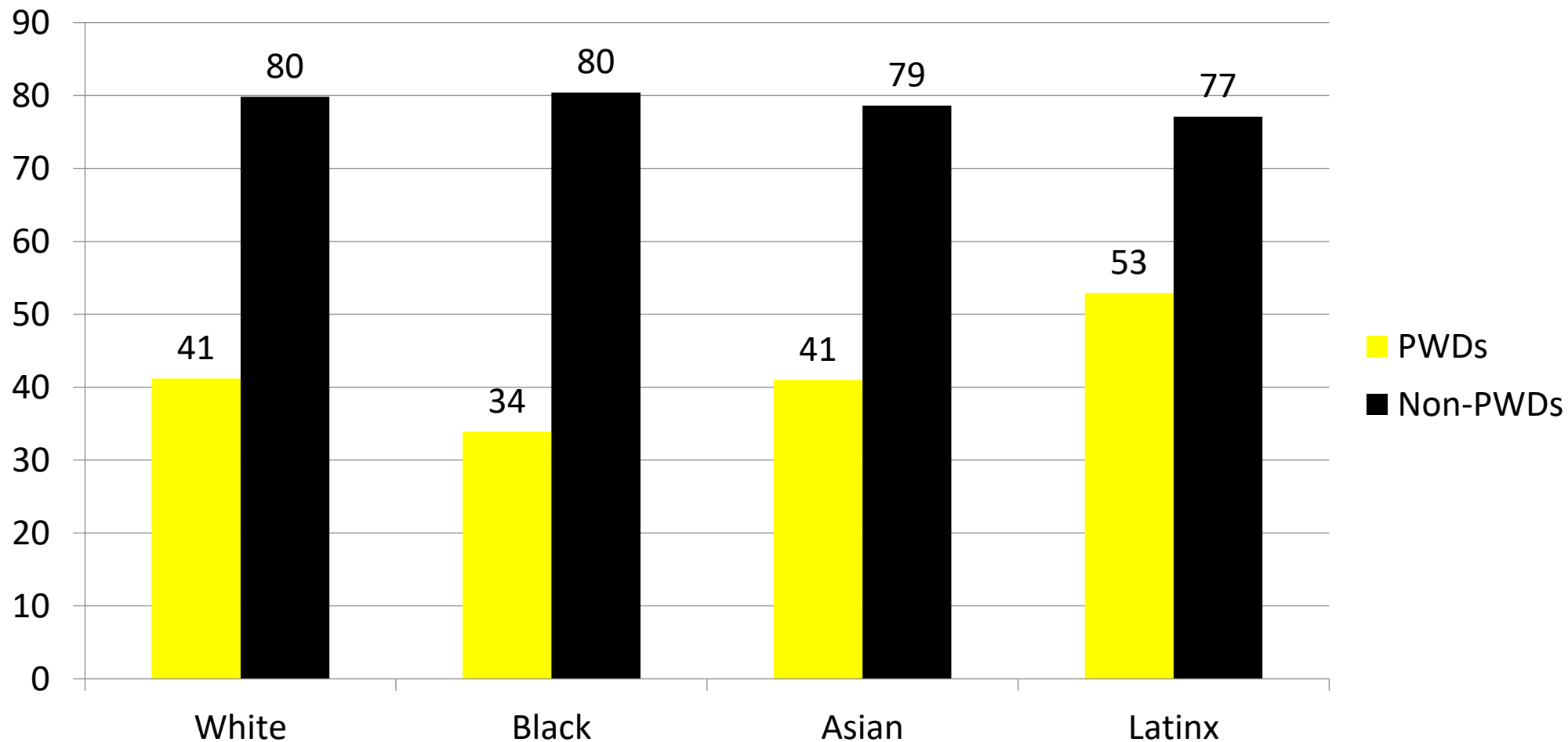
Recognizing Racial Disparities in Washington

- There are 20,982 working-age African Americans with disabilities. Out of that number, only 7,105 or 33.9% percent have jobs. **(Tables 3.22/3.27)**
- Fully 30.7% percent of African Americans with disabilities live in poverty compared to 14.7% percent of African Americans without disabilities. **(Tables 6.7/6.12)**
- There are 46,579 working-age Latinx people with disabilities. Out of that number, fully 24,647 or 52.9% percent have jobs. **(Tables 3.25/3.30)**
- Fully 22.7% percent of Latinx people with disabilities live in poverty, compared to only 16.9% Of Latinx people without disabilities. **(Tables 6.10/6.15)**
- There are 18,563 working-age Asian Americans with disabilities. Out of that number, only 7,612 or 41% percent have jobs. **(Tables 3.23/3.28)**
- Fully 26.1% percent of Asian Americans with disabilities live in poverty compared to 8% percent of Asian Americans without disabilities. **(Tables 6.8/6.13)**

SOURCE: Annual Disability Statistics Supplement: 2020. Univ. of New Hampshire, Institute on Disability.

<https://disabilitycompendium.org/compendium/2020-annual-disability-statistics-supplement>

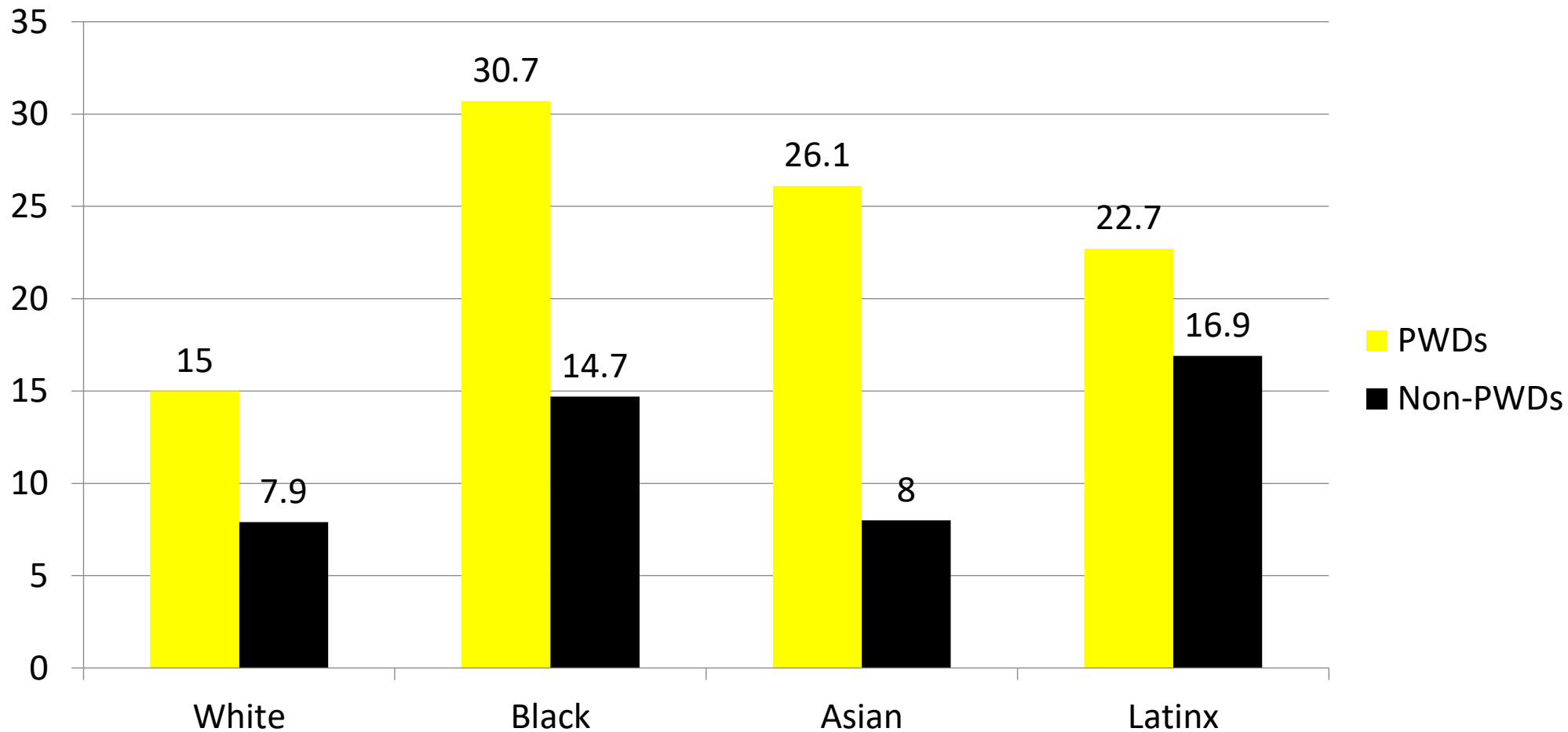
Employment Rates for Working-Age Washingtonians w/ & w/o Disabilities, by Race – 2019 (Pre-COVID)



SOURCE: Annual Disability Statistics Supplement: 2020. Univ. of New Hampshire, Institute on Disability.

<https://disabilitycompendium.org/compendium/2020-annual-disability-statistics-supplement>

Poverty Rates for Working-Age Washingtonians w/ & w/o Disabilities, by Race – 2019 (Pre-COVID)



SOURCE: Annual Disability Statistics Supplement: 2020. Univ. of New Hampshire, Institute on Disability.

<https://disabilitycompendium.org/compendium/2020-annual-disability-statistics-supplement>

Percentage & Number of Disability by Type - SWDs

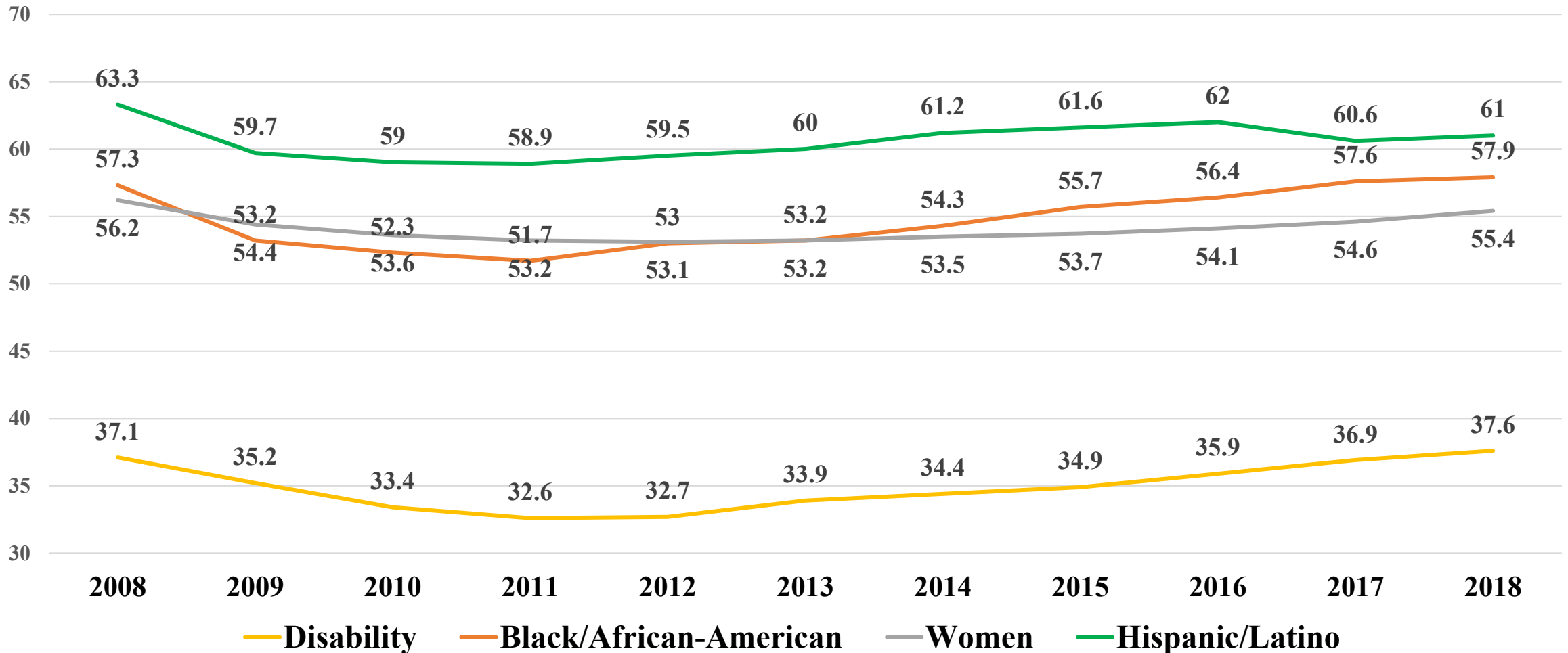
	Autism	Deaf-blindness	Developmental delay	Emotional disturbance	Hearing disabilities	Intellectual disabilities	Multiple disabilities	Orthopedic Disability	Other health conditions	Specific learning disabilities	Speech or language	Traumatic brain injury (TBI)	Visual disabilities
Number of SWDs with that Disability	15,383	20	8,979	5,633	997	5,010	3,007	347	27,913	48,076	18,143	313	418
Percentage of SWDs with that Disability	1.28%	0.00%	0.18%	0.58%	0.07%	0.53%	0.17%	0.03%	2.12%	3.27%	1.07%	0.02%	0.03%

In total, there are 134,239 students with disabilities in Washington State's Public School System today.

Source: IDEA Section 618 Data Products: Static Table -

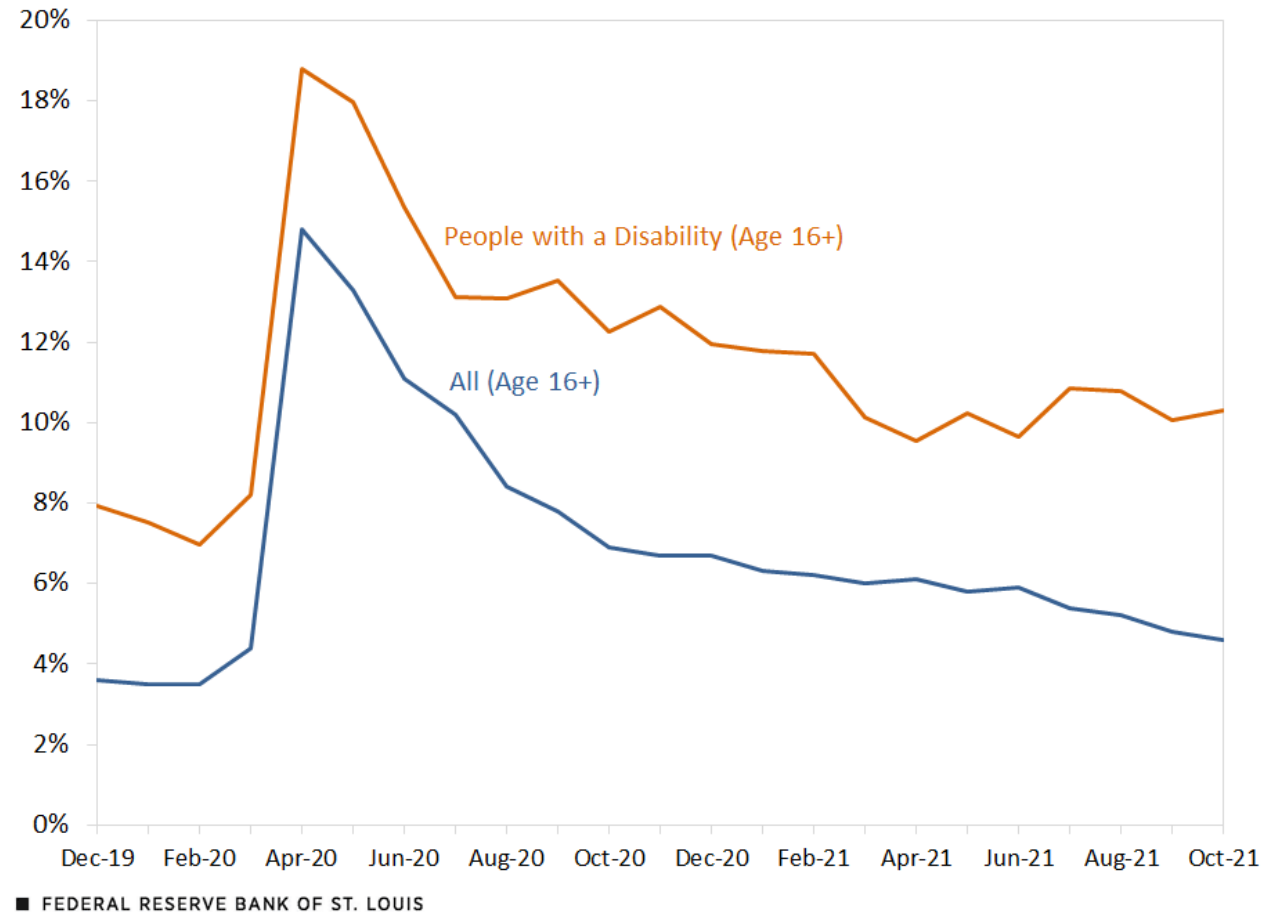
<https://www2.ed.gov/programs/osepidea/618-data/static-tables/index.html>

Employment Rates of Minority Populations (Percentage of population) – 2008 to 2018



SOURCES: <https://www.statista.com/statistics/793961/employment-among-disabled-us-adults/>
<https://www.bls.gov/charts/employment-situation/employment-population-ratio.htm>

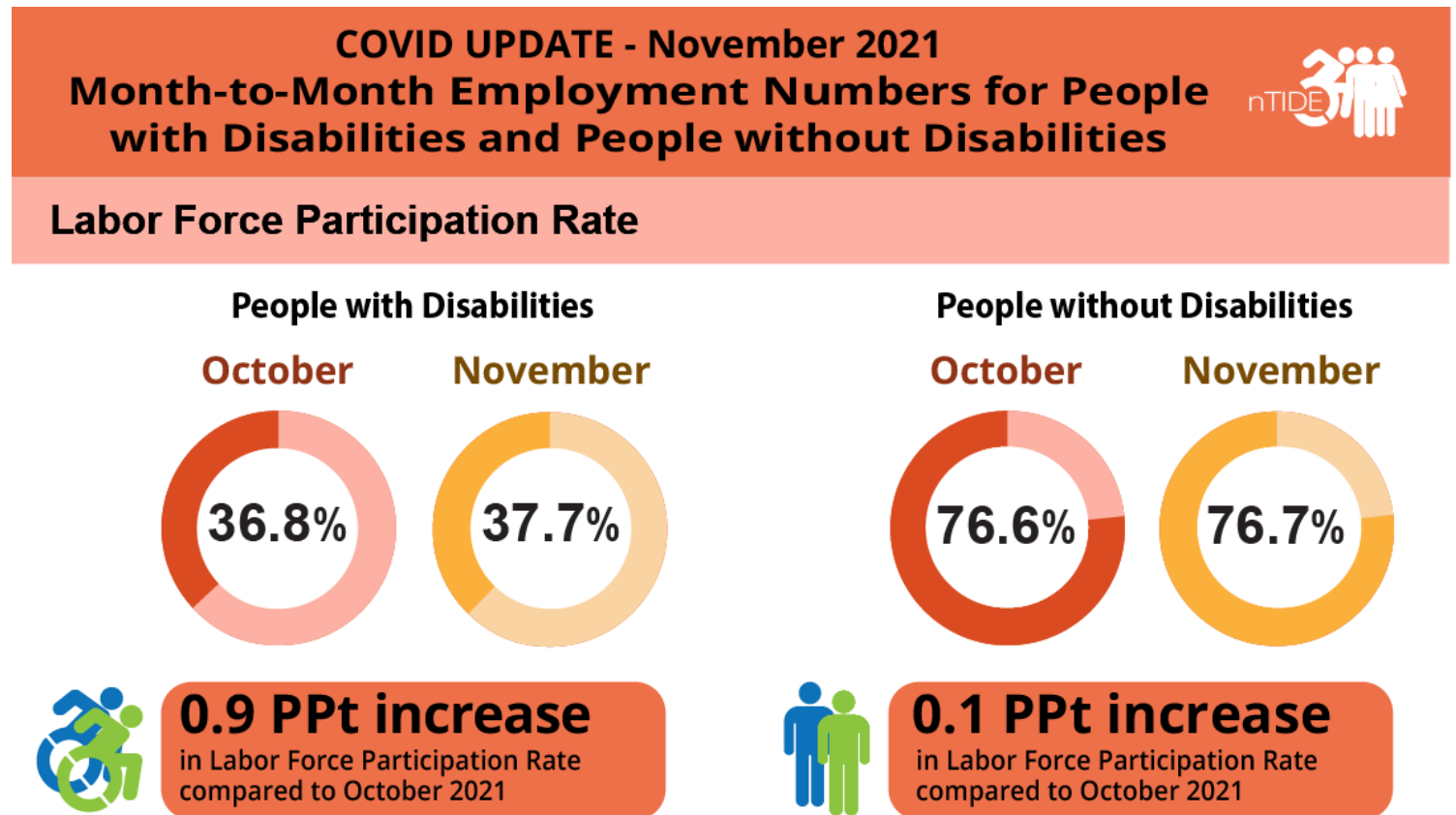
Unemployment Rates for PWDs in 2020



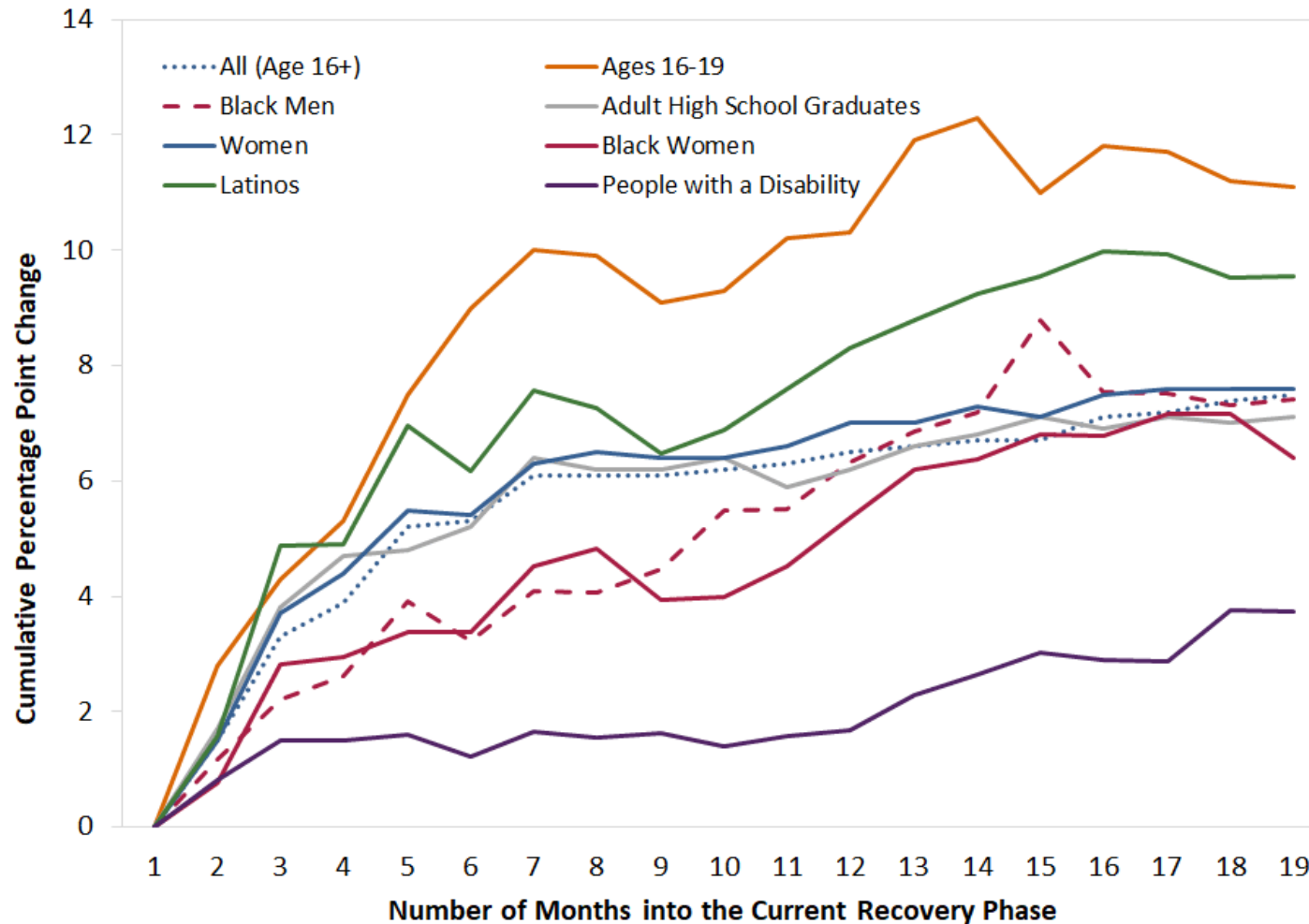
Source:
<https://www.stlouisfed.org/on-the-economy/2021/november/current-labor-market-workers-disability>

Labor Force Participation Rate in November 2021

- As [of November 2021](#), the labor force participation rate for working-age people with disabilities is now 2 full percentage points higher than it was before COVID-19.
- This means that people with disabilities are engaging with the labor force in higher numbers than before the pandemic.



Rebound in the Employment-to-Pop Ratio for Vulnerable Groups during the Recovery



■ FEDERAL RESERVE BANK OF ST. LOUIS

Source:

<https://www.stlouisfed.org/on-the-economy/2021/november/current-labor-market-workers-disability>



respect
ability

FIGHTING STIGMAS. ADVANCING OPPORTUNITIES.

THANK YOU!

Nelly Nieblas
Manager of Policy, Advocacy and
Engagement
RespectAbility
NellyN@RespectAbility.org